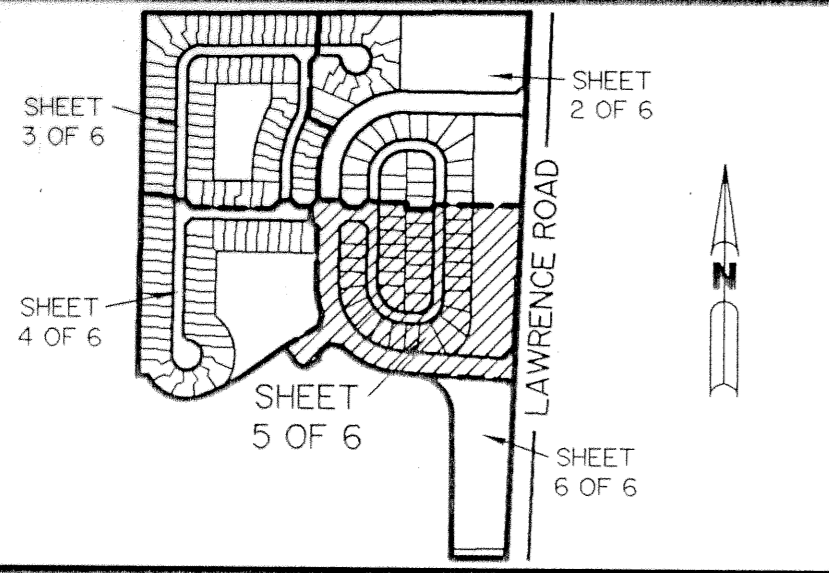


A PLANNED UNIT DEVELOPMENT

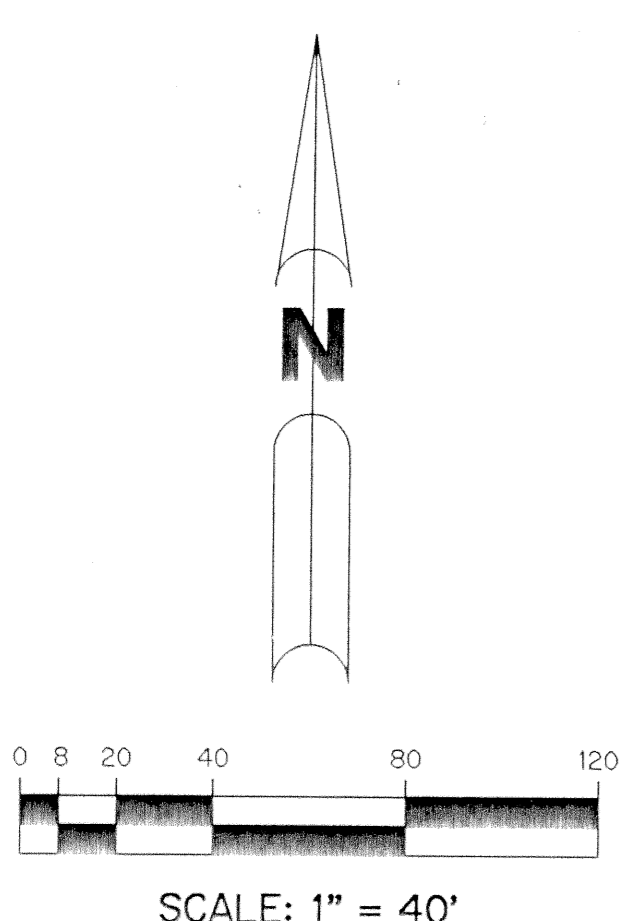
# NAUTICA P.U.D. - PLAT ONE

A PARCEL OF LAND LYING IN SECTION 13,  
TOWNSHIP 45 SOUTH, RANGE 42 EAST, CITY OF BOYNTON BEACH,  
PALM BEACH COUNTY, FLORIDA.

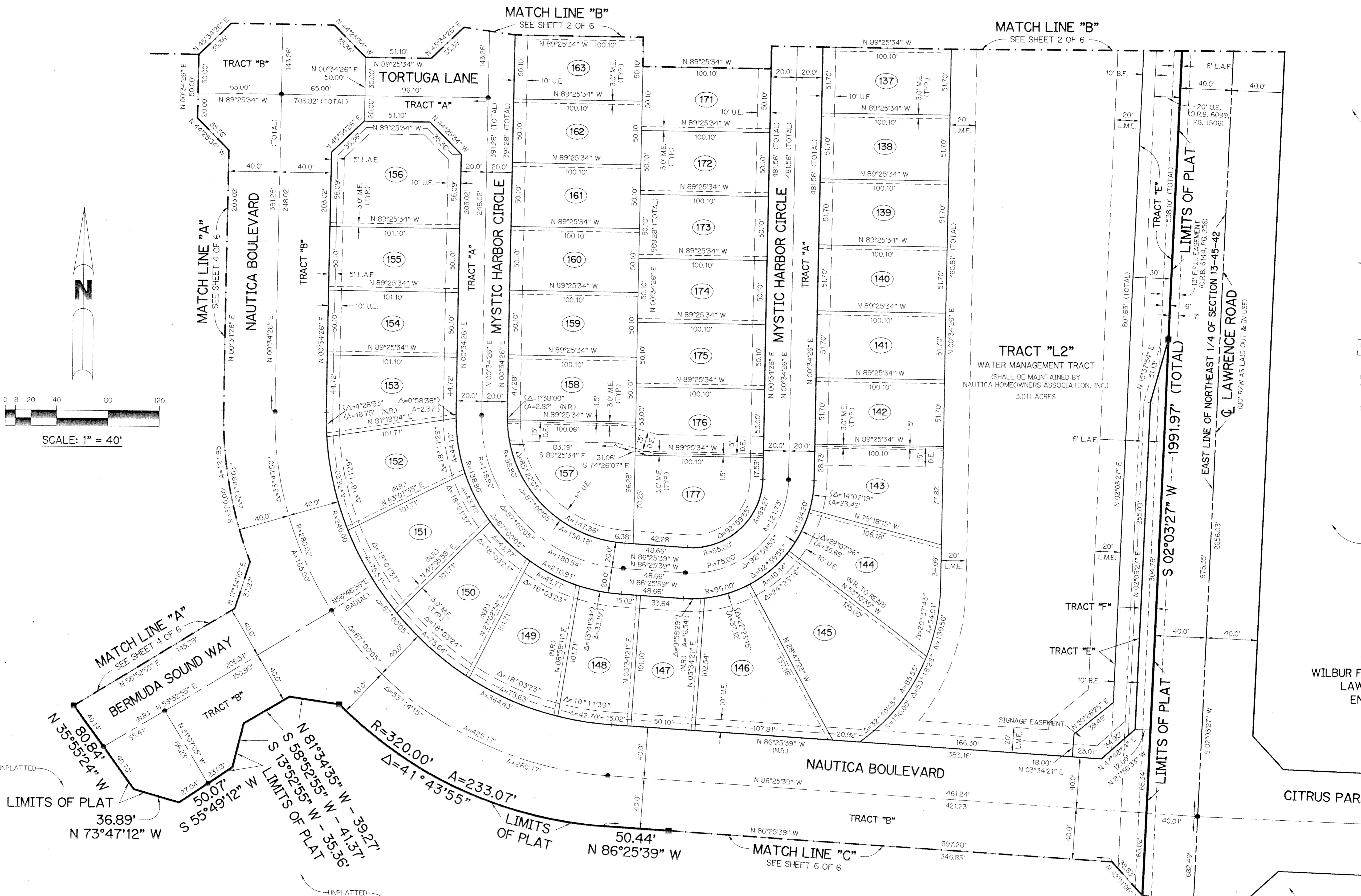
SHEET 5 OF 6 JANUARY, 1995



KEY MAP  
N.T.S.



SCALE: 1" = 40'



- LEGEND:**
- - PERMANENT REFERENCE MONUMENT, PLS #4190
  - - PERMANENT CONTROL POINT, PLS #4190
  - Δ - DELTA ANGLE
  - A - ARC LENGTH
  - B.E. - BUFFER EASEMENT
  - D.E. - DRAINAGE EASEMENT
  - F.P.L. - FLORIDA POWER & LIGHT EASEMENT
  - L.A.E. - LIMITED ACCESS EASEMENT
  - L.M.A.E. - LAKE MAINTENANCE ACCESS EASEMENT
  - L.M.E. - LAKE MAINTENANCE EASEMENT
  - L.W.D.D. - LAKE WORTH DRAINAGE DISTRICT
  - M.E. - DRAINAGE, MAINTENANCE AND OVERHANG EASEMENT
  - N.R. - NOT RADIAL
  - N.T.S. - NOT TO SCALE
  - O.R.B. - OFFICIAL RECORD BOOK
  - P.B. - PLAT BOOK
  - P.G.S. - PAGES
  - P.L.S. - PROFESSIONAL LAND SURVEYOR
  - R - RADIUS
  - R/W - RIGHT-OF-WAY
  - S.T. - SURVEY TIE
  - U.E. - UTILITY EASEMENT

THIS INSTRUMENT PREPARED BY  
WILBUR F. DIVINE, P.L.S. 4190, STATE OF FLORIDA  
LAWSON, NOBLE AND ASSOCIATES, INC.  
ENGINEERS PLANNERS SURVEYORS  
WEST PALM BEACH, FLORIDA

SUBDIVISION - Nautica P.U.D. - Plat One  
BOOK - 74  
PAGE - 174  
FLOOD MAP -  
QUAD -  
ZONING -  
SE -  
ZIP CODE -  
PUD NAME - Boynton Bch.